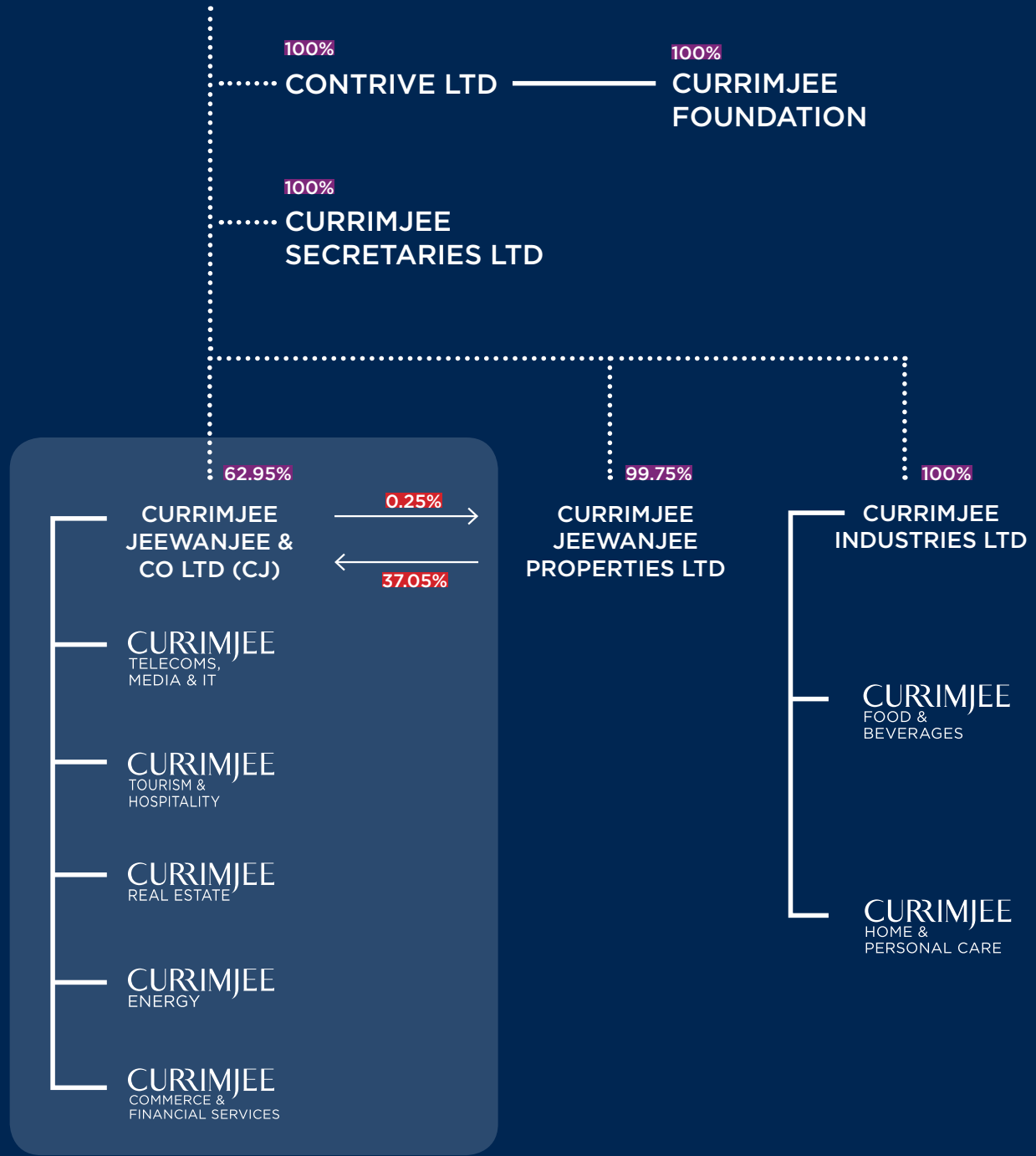


OUR GROUP STRUCTURE

CURRIMJEE LIMITED (FORMERLY KNOWN AS FAKHARY LIMITED)





CURRIMJEE SECRETARIES LTD (CSL)

Currimjee Secretaries Limited provides secretarial services to the Currimjee Group of Companies. CSL is a wholly owned subsidiary of Currimjee Limited (formerly known as Fakhary Limited).

CONTRIVE LTD

Contrive Ltd (formerly known as "Currimjee Limited") is a subsidiary of Currimjee Limited (formerly known as "Fakhary Limited") and the holding company of Currimjee Foundation.

CURRIMJEE FOUNDATION

Incorporated in November 2009, the Currimjee Foundation (CF) is the vehicle through which the CSR projects of the Currimjee Group are managed and monitored. CF ensures a focused and coordinated approach to CSR while leveraging the management resources of the business units and ensuring optimum employee participation and involvement. CF funds initiatives that fall under different intervention areas such as health, education, training, leisure and sports, the environment and socio-economic development.